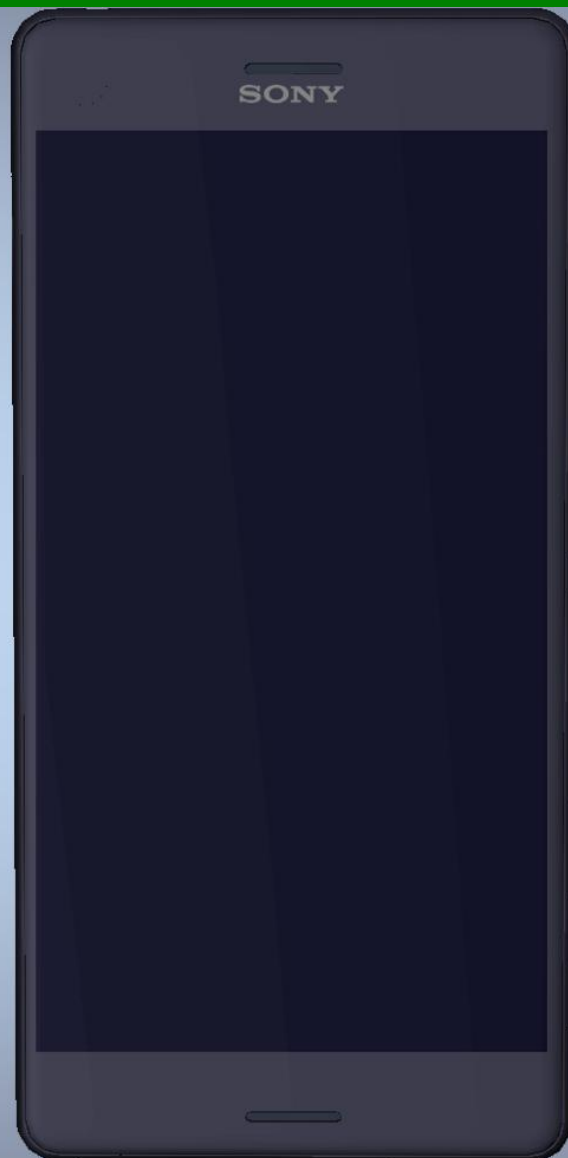


Component Replacement - electrical -



Xperia™ X
F5121, F5122 (Dual SIM)

CONTENTS

1 Replaceable Components 3

2 Component Placing..... 6

3 Repair Actions 8

 3.1 Additional Repair Info 8

4 Revision History 14

For general information about electrical repair related issues, refer to 1220-1336: Generic Repair Manual – electrical

PWB package opening. Too long exposure time increase the level of moisture in PWB and the PWB could delaminate during repair process and result in direct or latent failures and reduce reliability.

The boards shall be baked in 125°C ±5°C for 4 hours.

Test after electrical replacement: refer to 1273-1772 Mechanical Test Instruction

All Electrical components are RLC level C, Reversed Logistic Classification, See the Spare Part Handling chapter in Mechanical/Generic Repair Manual 1220-1333.

Do not remove shield can lids (Heat pasta are added and RF performance will be damaged)

1 Replaceable Components

EXPLANATION OF ABBREVIATIONS USED IN THE COLUMN 'COMMENTS' BELOW

COMPONENT LOCATION

P = Primary side

S = Secondary side

REPAIR METHOD

HA = Hot Air (removal & mounting)

ST = Soldering Tool (removal & mounting)

HA/ST = Hot Air for removal - Soldering Tool for mounting

BGA = BGA Station

BH = Bottom Heater

ADDITIONAL INFORMATION

⇒1 (2,3,4, etc.) = Proceed to 'Additional Repair Info' for further instructions in the indicated section(s).

Component Replacement (elect)

Primary side

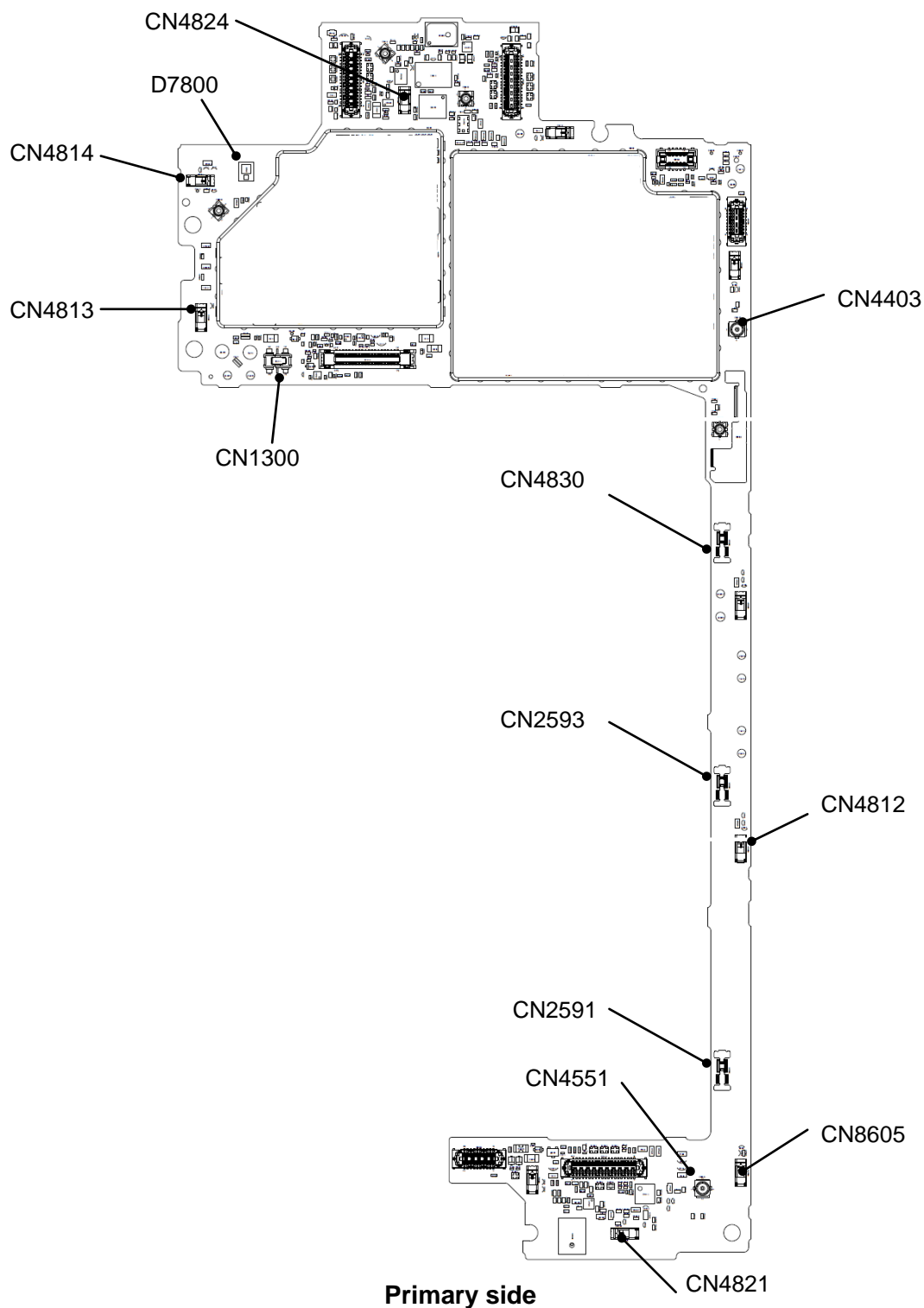
Position	Component	Part no.	Comments
CN1300	Conn BtB Plug 4p HIROSE/BM22	1281-9973	P HA+BH ⇨1
CN2591	Conn Coax Receptacle 1p Mount Clip	1287-4587	P HA+BH ⇨7
CN2593	Conn Coax Receptacle 1p Mount Clip	1287-4587	P HA+BH ⇨6
CN4403	Conn Coax Receptacle 1p	1261-3585	P HA+BH ⇨4
CN4551	Conn Coax Receptacle 1p	1261-3585	P HA+BH ⇨8
CN4812	Conn Leaf Spring Plug 1p	1294-8163	P HA+BH ⇨6
CN4813	Conn Leaf Spring Plug 1p	1294-8163	P HA+BH ⇨1
CN4814	Conn Leaf Spring Plug 1p	1294-8163	P HA+BH ⇨2
CN4821	Conn Leaf Spring Plug 1p	1294-8163	P HA+BH ⇨9
CN4824	Conn Leaf Spring Plug 1p	1294-8163	P HA+BH ⇨3
CN4830	Conn Coax Receptacle 1p Mount Clip	1287-4587	P HA+BH ⇨5
CN8605	Conn Leaf Spring Plug 1p	1294-8163	P HA+BH ⇨8
D7800	LED White 1.63mm x 2.03mm	1278-5197	P HA+BH ⇨2

SONY

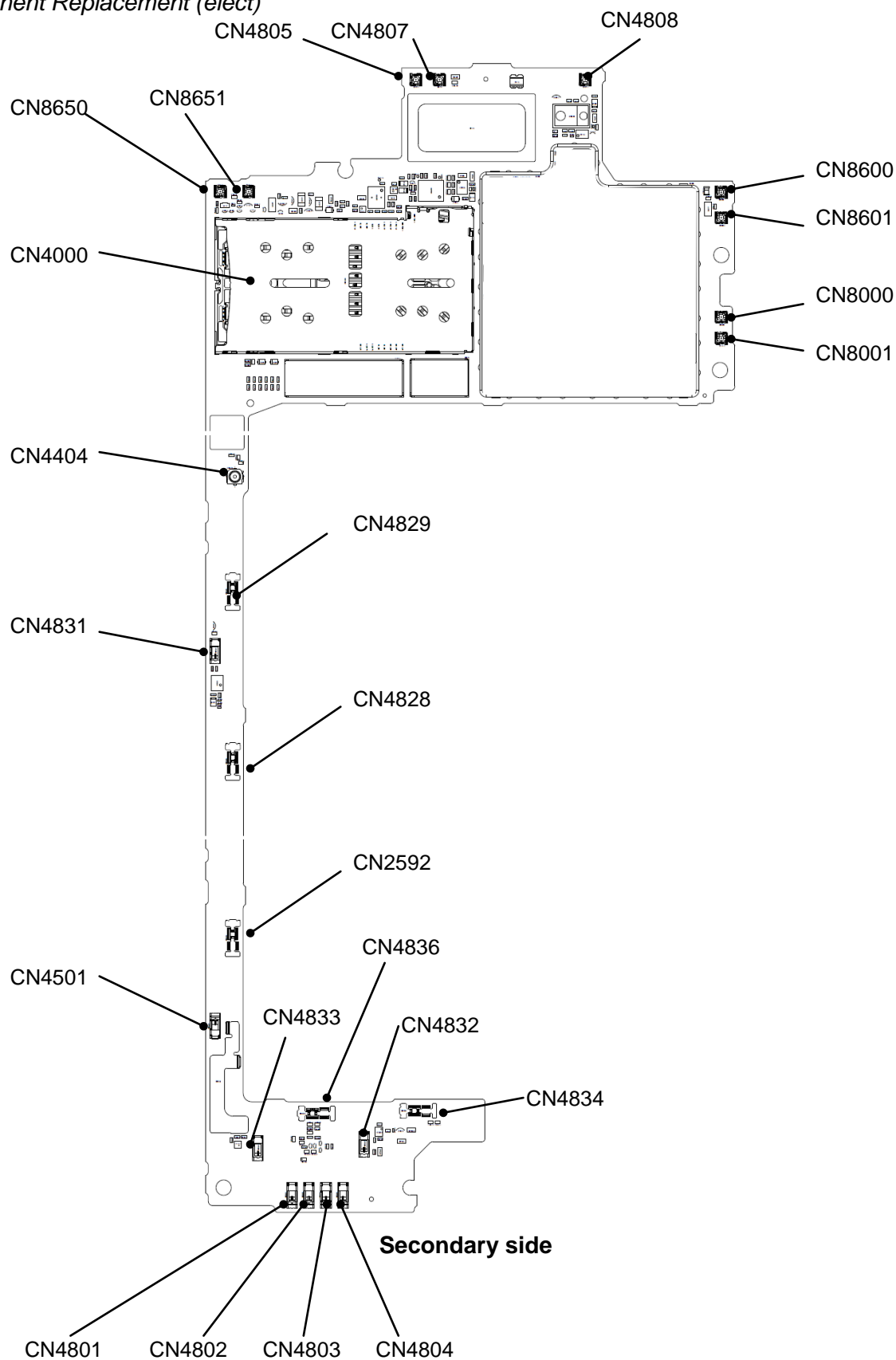
Component Replacement (elect) Secondary side

Position	Component	Part no.	Comments
CN2592	Conn Coax Receptacle 1p Mount Clip	1287-4587	S HA+BH ⇨19
CN4000	Card Conn SIM 3in2 Connector	1299-2861	S HA+BH or BGA ⇨15
CN4404	Conn Coax Receptacle 1p	1299-1838	S HA+BH ⇨16
CN4501	Conn Leaf Spring Plug 1p	1295-7077	S HA+BH ⇨19
CN4801	Conn Leaf Spring Plug 1p	1297-5833	S HA+BH ⇨21
CN4802	Conn Leaf Spring Plug 1p	1297-5833	S HA+BH ⇨21
CN4803	Conn Leaf Spring Plug 1p	1297-5833	S HA+BH ⇨21
CN4804	Conn Leaf Spring Plug 1p	1297-5833	S HA+BH ⇨21
CN4805	Conn Pogopin Plug 1p	1299-5323	S HA+BH ⇨13
CN4807	Conn Pogopin Plug 1p	1299-5323	S HA+BH ⇨13
CN4808	Conn Pogopin Plug 1p	1299-5323	S HA+BH ⇨12
CN4828	Conn Coax Receptacle 1p Mount Clip	1287-4587	S HA+BH ⇨18
CN4829	Conn Coax Receptacle 1p Mount Clip	1287-4587	S HA+BH ⇨17
CN4831	Conn Leaf Spring Plug 1p	1294-5853	S HA+BH ⇨17
CN4832	Conn Leaf Spring Plug 1p WH : 0.8+-0.2	1294-8905	S HA+BH ⇨22
CN4833	Conn Leaf Spring Plug 1p WH : 0.8+-0.2	1294-8905	S HA+BH ⇨20
CN4834	Conn Coax Receptacle 1p Mount Clip	1287-4587	S HA+BH ⇨22
CN4836	Conn Coax Receptacle 1p Mount Clip	1287-4587	S HA+BH ⇨20
CN8000	Conn Pogopin Plug 1p	1299-5323	S HA+BH ⇨ 10
CN8001	Conn Pogopin Plug 1p	1299-5323	S HA+BH ⇨ 10
CN8600	Conn Pogopin Plug 1p	1299-5323	S HA+BH ⇨ 11
CN8601	Conn Pogopin Plug 1p	1299-5323	S HA+BH ⇨ 11
CN8650	Conn Pogopin Plug 1p	1299-5323	S HA+BH ⇨14
CN8651	Conn Pogopin Plug 1p	1299-5323	S HA+BH ⇨14

2 Component Placing



Component Replacement (elect)



3 Repair Actions

Refer to the Tools Catalogue/Matrix for information about equipment required for PBA repair!

3.1 Additional Repair Info

1

CN1300

Replace if mechanically damaged. (Phone dead or power off)

Protect the BtB connector with capton tape!

CN4813

Replace if mechanically damaged. (No or bad network)

2

CN4814

Replace if mechanically damaged. (No or bad network)

D7800

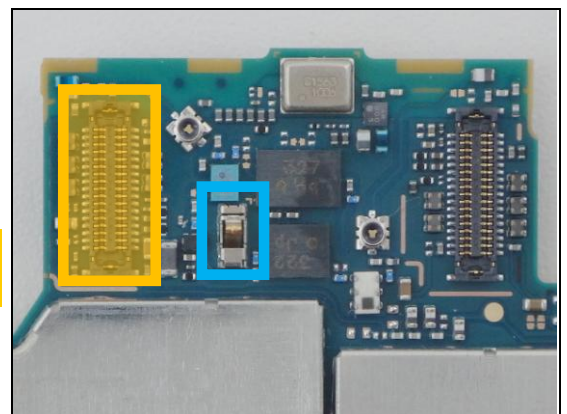
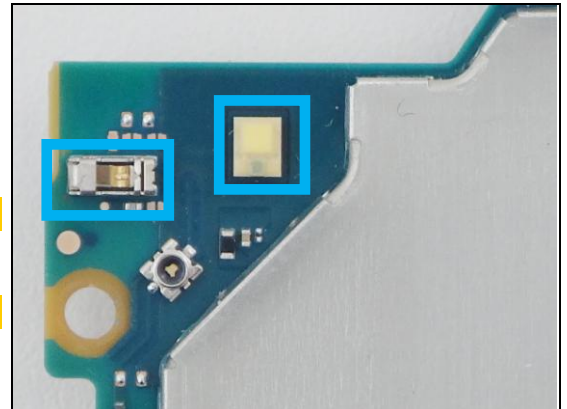
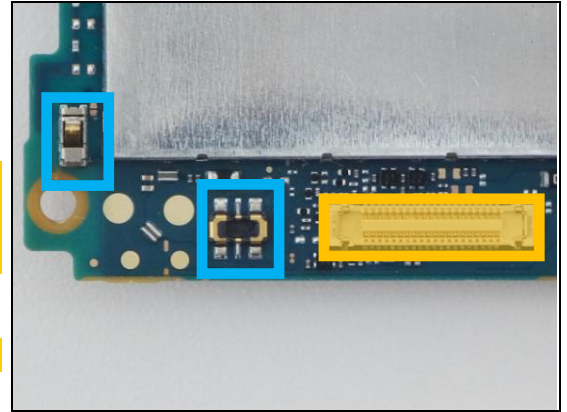
Replace if Flash LED not working.

3

CN4824

Replace if mechanically damaged. (No or bad network)

Protect the BtB connector with capton tape!



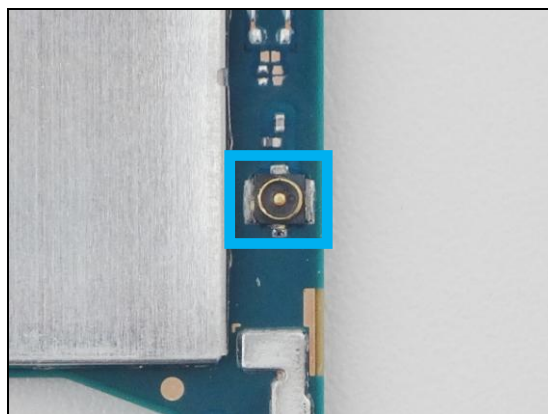
SONY

Component Replacement (elect)

4

CN4403

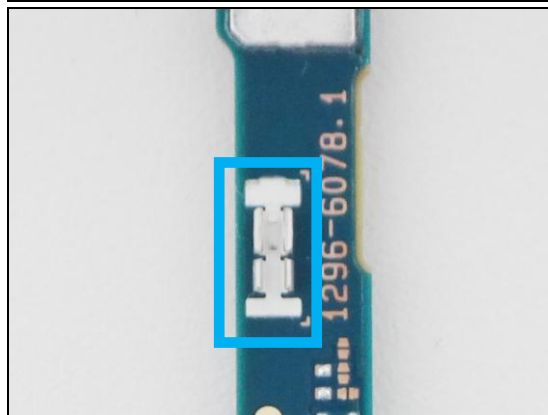
Replace if mechanically damaged. (No or bad network)



5

CN4830

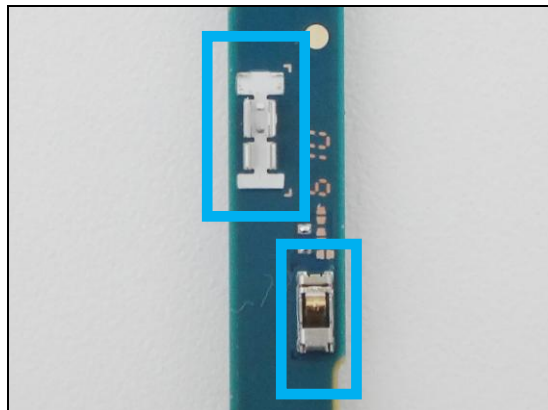
Replace if mechanically damaged.



6

CN2593, CN4812

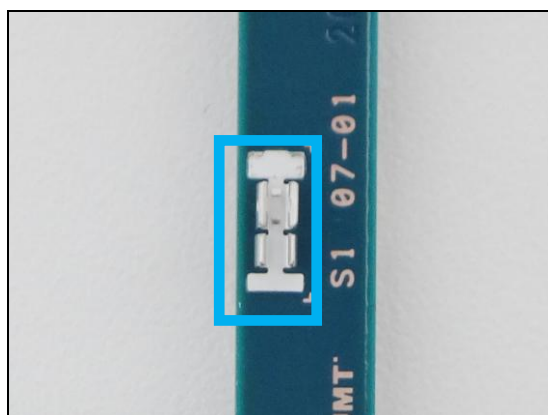
Replace if mechanically damaged. (No or bad network)



7

CN2591

Replace if mechanically damaged.



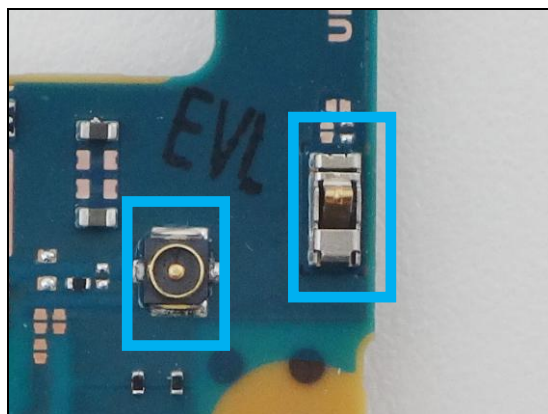
SONY

Component Replacement (elect)

8

CN4551, CN8605

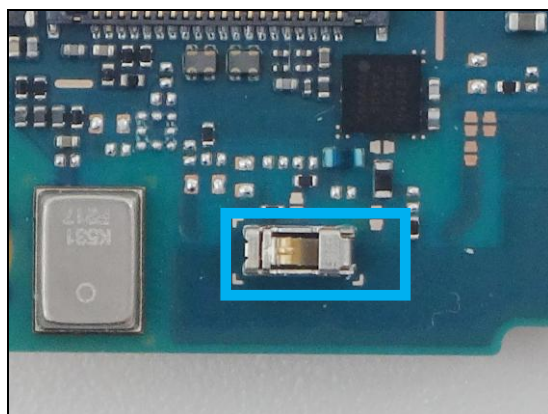
Replace if mechanically damaged. (No or bad network)



9

CN4821

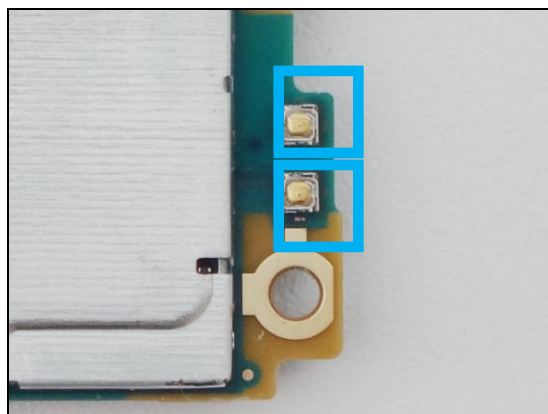
Replace if mechanically damaged. (No or bad network)



10

CN8000, CN8001

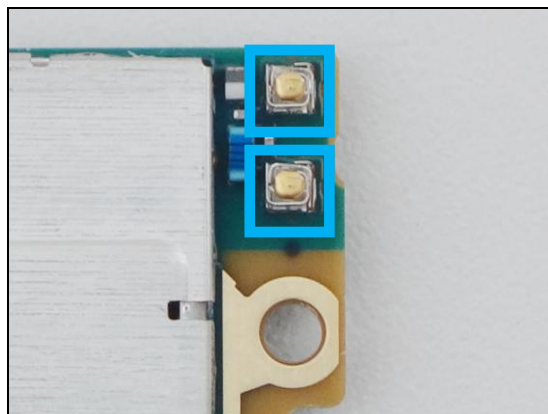
Replace if mechanically damaged. (No or bad network)



11

CN8600, CN8601

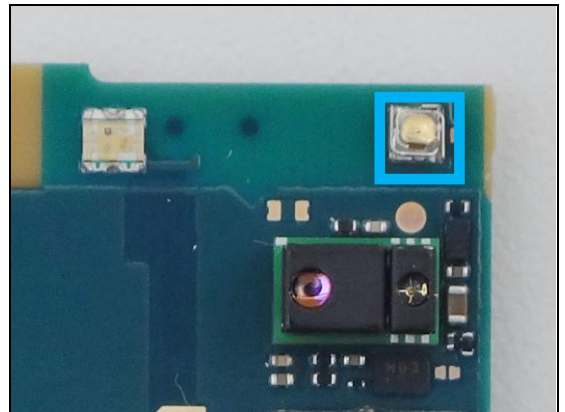
Replace if mechanically damaged. (No or bad network)



12

CN4808

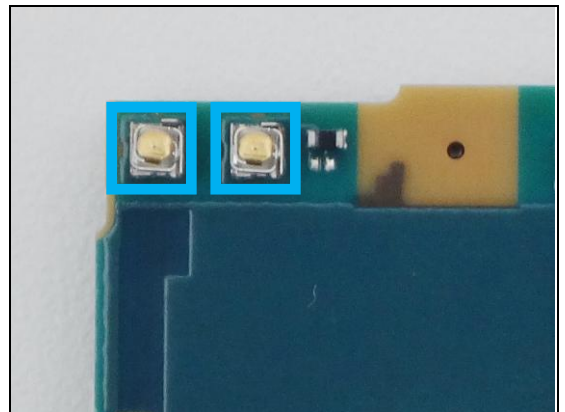
Replace if mechanically damaged. (No or bad network)



13

CN4805, CN4807

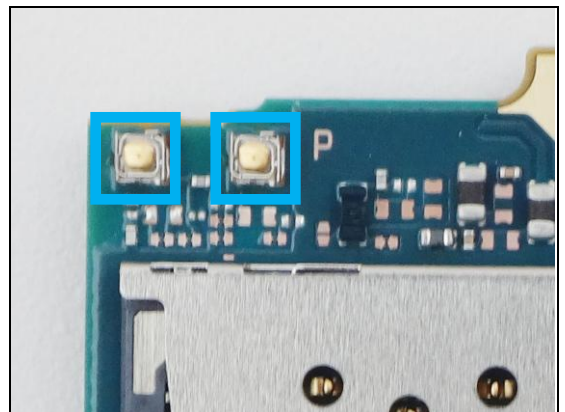
Replace if mechanically damaged. (No or bad network)



14

CN8650, CN8651

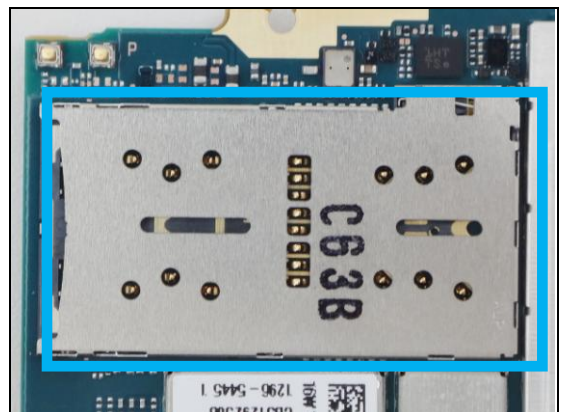
Replace if mechanically damaged. (No or bad network)



15

CN4000

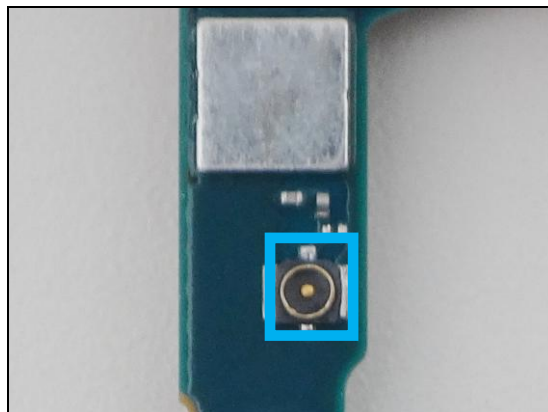
Replace if mechanically damaged. (Restart, No SIM card detected, reset problem)



16

CN4404

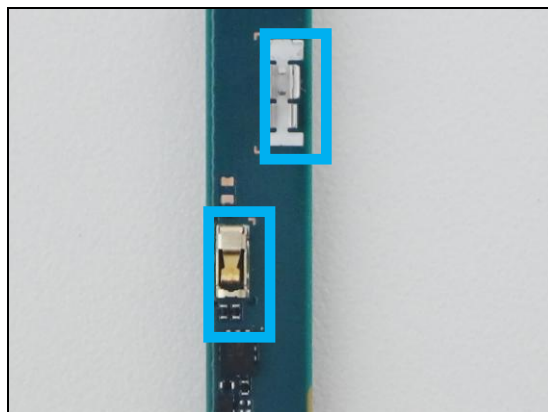
Replace if mechanically damaged. (No or bad network)



17

CN4829, CN4831

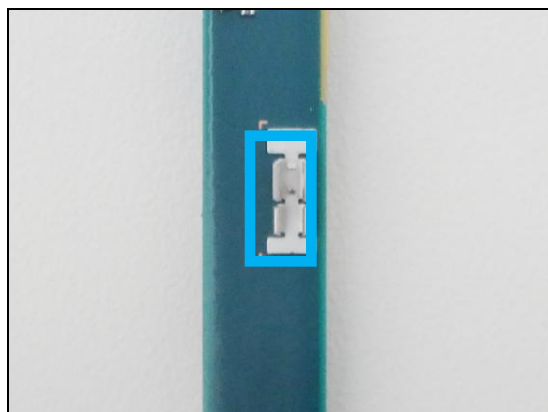
Replace if mechanically damaged. (No or bad network)



18

CN4828

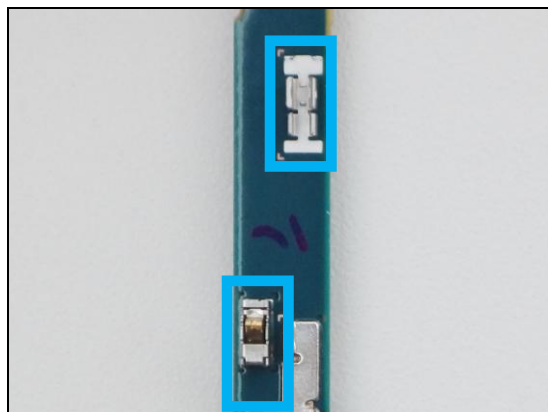
Replace if mechanically damaged.



19

CN2592, CN4501

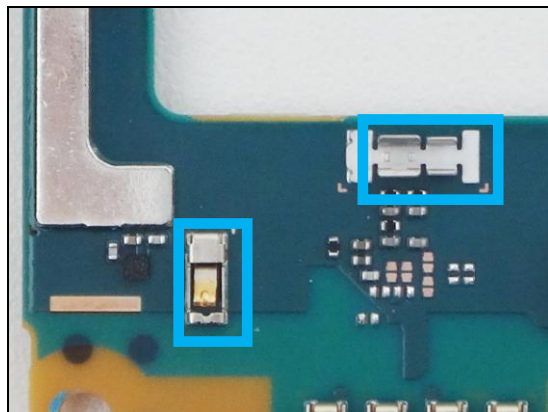
Replace if mechanically damaged. (No or bad network)



20

CN4833, CN4836

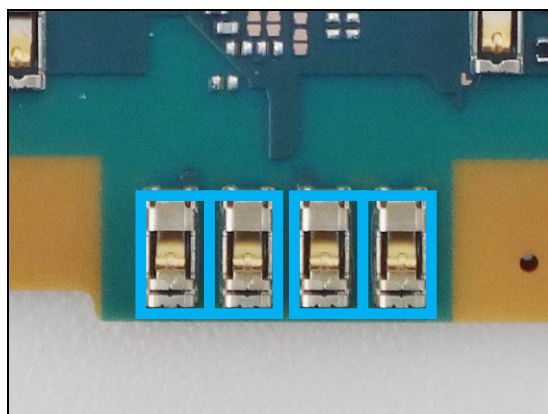
Replace if mechanically damaged. (No or bad network)



21

CN4801, CN4802, CN4803, CN4804

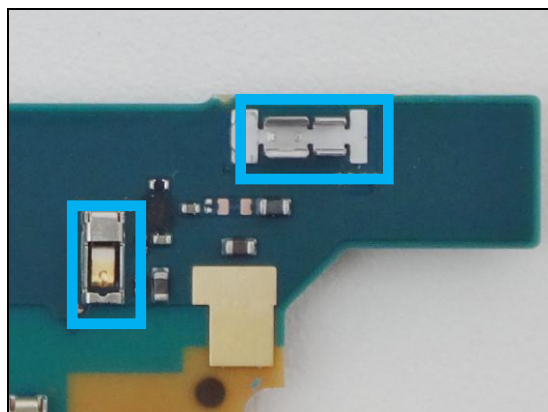
Replace if mechanically damaged. (No or bad network)



22

CN4832, CN4834

Replace if mechanically damaged. (No or bad network)



4 Revision History

Rev.	Date	Changes / Comments
1	2016-05-13	Initial release